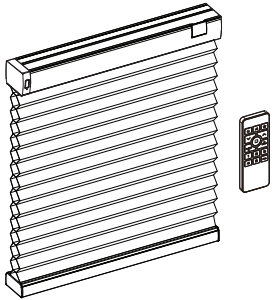


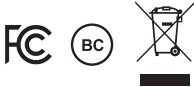
## MOTORIZED CELLULAR SHADE MANUAL



(MCS1-B for Battery)

NO.	Item	Specification
1	Power Source	MCS1-B: Li-ion Battery
2	Input	MCS1-B: 24V, 1.5A Max
3	Output	MCS1-B: 10.89V, 1.65A Max.
4	Radio type	2.4G RF
5	Motor type	Brush DC motor
6	Charging type	Power Charger PB-01S Power Charger PB-02
7	Charging Time	< 2 hours
8	Charging Temperature	5°C ~ 35°C / 41°F ~ 95°F
9	Operating Temperature	0°C ~ 40°C / 32°F ~ 104°F
10	Relative Humidity	0% ~ 90% (Non-condensing)

FCC ID: Q3V-MCS1  
IC ID: 28542-MCS1  
CAN ICES-003 (B) / NMB-003(B)



## SAFETY PRECAUTIONS

**Thank you for your purchase. Please read the instructions carefully before using the product, and save these instructions for future consultation.**

- **WARNING!** Important safety instruction: It is critical for your safety and the safety of those around you to follow these instructions. Save these instructions.
- **WARNING!** The device shall be disconnected from its power source during cleaning, maintenance and when replacing parts.
- The products may contain Lithium-ion batteries; the battery contains flammable materials such as organic solvents. Please read the Important Safety Precautions before using the product.
- Please recharge the batteries every 3-6 months to ensure optimal performance of batteries.
- Product operation is intended for temperatures between 0°C/32°F ~40°C/104°F.
- Please note that the limited warranty will be voided if the product is modified, dismantled or used in any manner other than its intended purpose.
- The accessories, including Power Charger, Remote Control, Hub, and Repeater are designed to be used with : authorized Motorized Shades.
- **DO NOT** use them for any other purpose.
- Please make sure the shade route is clear when operating to avoid danger or damage.
- In order to improve the user experience and functionality, the firmware and software of this product will automatically update from time to time. (When the Hub is installed)
- **WARNING!** For the purposes of recharging the battery, only use the detachable supply unit provided with this appliance( UHVUU3036-240015SA).
- **DO NOT** disassemble the products or any of their components. They do not contain serviceable parts. Servicing of these products should be referred to qualified personnel.
- This appliance contains batteries that are only replaceable by skilled personnel, trained authorized retailer or electrician.
- **DO NOT** operate the product with wet hands to avoid risk of electrical shock. The product needs to be powered off and disconnected from its power source during cleaning, maintenance and/or replacing parts.

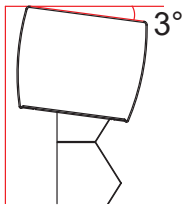
- **DO NOT** operate the shade or swing the Power Charger while charging.
- The product is not to be used by persons such as children, those with reduced physical, sensory or mental capabilities, or those who lack experience and knowledge of the product, unless they have been given supervision or instruction. Children should be advised not to play with the products.
- **DO NOT** allow children to play with fixed controls. Keep remote controls away from children. Frequently examine the installation for imbalance, signs of wear or damage to cables, springs and fixings.
- **DO NOT** use if repair or adjustment is necessary.
- **DO NOT** operate when maintenance, such as window cleaning, is being carried out in the vicinity.
- **IMPORTANT:** Please reserve space for connecting the Power Charger while installing the shade, please refer to “Read Before Installation” Section for more information.

## READING BEFORE INSTALLATION

**▲WARNING!** Important safety instructions. Follow all instructions since incorrect installation can lead to severe injury.  
Before installing the device, remove any unnecessary cords or components and disable any equipment not needed for powered operation.  
**▲WARNING!** The installation height will vary according to product type or installation situation and may exceed 2.5m.

**Reserve space before installation :**

**For Model# MCS1-B :** with built-in Li-ion battery pack and charging accessories.  
**▲ IMPORTANT!** Please mount the shade bracket horizontally and ensure the installation is not defective, or it may fail to charge the shade with a Power Charger. The shade system installation allows a Maximum 3° tolerance of deflection.



## TOOLS YOU WILL NEED

- Level
- Measuring Tape
- Pencil
- Power drill (6mm hex driver and drill bit)
- Screwdriver



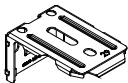
You will need to use the following fasteners for your particular mounting surface.

Surface	Fastener
Wood	Screws (Provided)
Drywall/Plaster	Wall Anchors, Expansion Bolts (Not Provided)
Metal	Sheet Metal Screws (Not Provided)

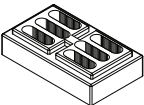
## GETTING STARTED

Check Standard Components/Hardware:

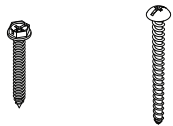
Installation Bracket



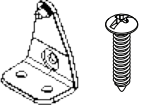
Spacer (Optional)



Installation Bracket Screw



Hold Down Bracket (Optional) & Its Screw

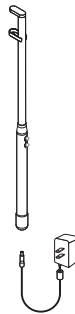


**Hardware Standard Quantity:**

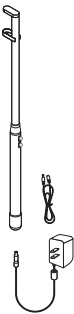
Order Width (X)	X ≤ 64"	64" < X ≤ 112"	X > 112"
Installation Bracket	2	3	4
Installation Bracket Screw	4	6	8
Spacer Block (Optional)	Vary per order request: 1pc / bracket or 2pcs/bracket		
Hold Down Bracket (Optional)	2	2	2
Hold Down Bracket Screw (Optional)	4	4	4

**Check Components for MCS1-B for Battery:**

Charging Wand (Power Charger)(Optional)



Wireless (with  
Battery)  
/Model#PB-01S



Wired (without  
Battery)  
/Model#PB-02

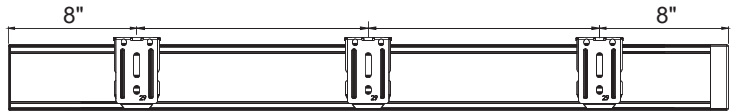
## MOUNTING INSTALLATION BRACKETS

The installation bracket may be used for **INSIDE** or **OUTSIDE** mounts.

**Mounting the brackets level is essential for proper operation of the shade.**

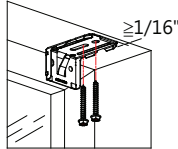
Shim the brackets if necessary to achieve a level alignment. The bracket requirements and placement are the same for inside

Measure 8" from both ends of the headrail. Mark the bracket location on the mounting surface. Proper alignment of brackets will make installation easier.

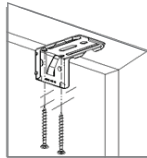


**Inside Mount:**

Align the front of brackets ≥ 1/16" to the edge of window opening as right drawing. Use two installation screws to secure brackets. Use wall anchors for drywall or plaster wall.

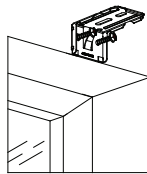


\* For shallow mounting, use 2pcs of flat head screws to secure the bracket as right

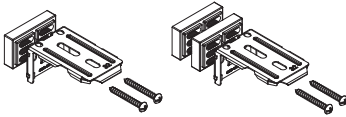


**Outside Mount:**

Use two installation screws to secure brackets. Use wall anchors for drywall or plaster wall.

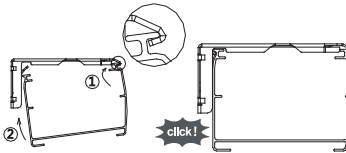


Note: If spacer block is provided, please follow this guide:  
Please always make sure the raised side of the spacer block is against the bracket.



**Install the Shade:**

Position the head rail at an angle so that it is hooked to the front of the bracket. Then push it upward at the back to snap into the bracket.

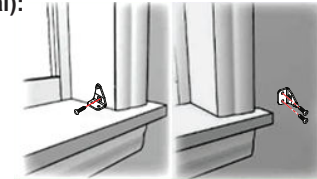


Note: You will hear a click sound once the head rail is properly secured.

**Install Hold Down Bracket (Optional):**

**A.For Hold Down Brackets.**

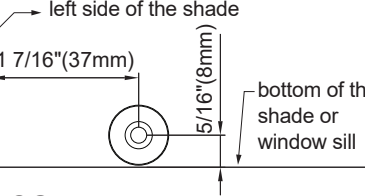
Use screw to secure each bracket.



Inside Mount      Outside Mount

**B. For Magnetic Hold Down**

Use M3x15mm screw to secure the magnet catch at the below location. Make sure the magnet catch align with the pre-installed magnet on shade bottom rail.

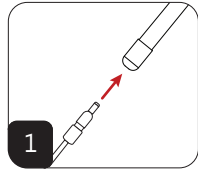


## CHARGE THE SHADE (MCS1-B)

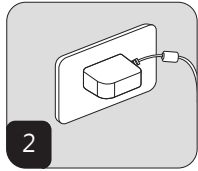
**▲WARNING!**

- Please DO NOT operate the shade or swing the Power Charger while charging.
- Please recharge your shade every 3-6 months to ensure optimal performance of batteries.
- Please only use the 36W AC Adapter included with this product. If using the extension cable, please DO NOT bend or twist the cable to avoid product damage or raise safety concerns.
- Please charge the shade before use!
- For Power Charger(PB-01S), please DO NOT use it to charge the shade while it is being charged/plugged into the outlet.

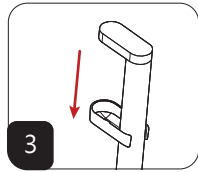
**Charge the Shade by Power Charger (PB-02 without Battery)**



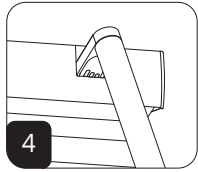
1 Plug the DC connector of adapter into the power charger.



2 Plug the 36W AC Adapter securely into wall outlet.



3 Remove Dust Cover from Power Charger.

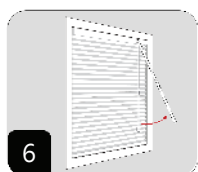


4 Align and insert the Charging Connector to Charging port to charge the shade.

**▲WARNING! DO NOT release the power charger from your hand until it's inserted securely to avoid damage or personal injury caused by falling.**



5 When the green light of power meter of shade started flashing, it indicates it's charging. When the 'shade' is fully charged, the green light stays on and stop flashing.



6 After charging, to detach and disconnect the Power Charger, and lift it slightly and then remove it from the shade.



After charging, please store the 36W AC Adapter, Extension Cables, Power Charger and other accessories for later use.

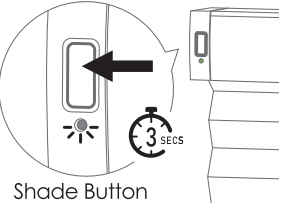
**Charge the Shade by Power Charger (PB-01S with Battery)**  
Repeat the same step 3 ~ 6 of the section **“Charge the Shade by Power Charger (PB-02)”** to charge the shade.  
**After charging, please recharge Power charger (PB-01S) for next use.**

SHADE OPERATION

For Shade model# **MCS1-B** for Battery:

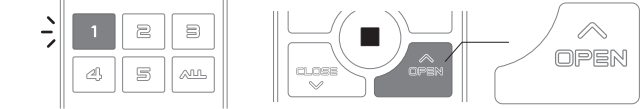
Press and hold the shade button for 3 seconds and the green light will flash for power on before operation.

Press and hold the shade button for 3 seconds and the red light will flash for power off when necessary.



Operate the Shade by Remote Control:

Select the group of the shade, press OPEN to move shade to fully open.



Select the group of the shade, press CLOSE to move shade to fully closed.

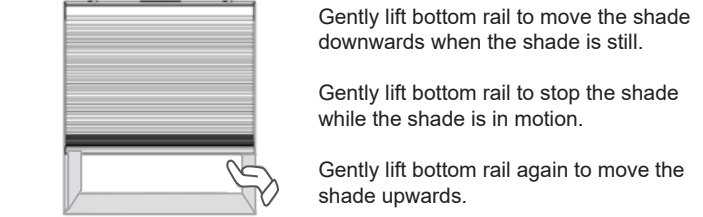


Select the group of the shade, press ^ or v to adjust shade location.



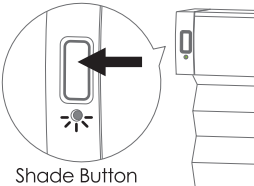
■ : Stop the shade    ▲ : Move to Best View  
▲ : Move to Best Privacy    ☆ : Move to My Favorite

**Single Tap Control to Operate the Shade:**  
When remote is out of reach, the shade can be operated by Single Tap function.



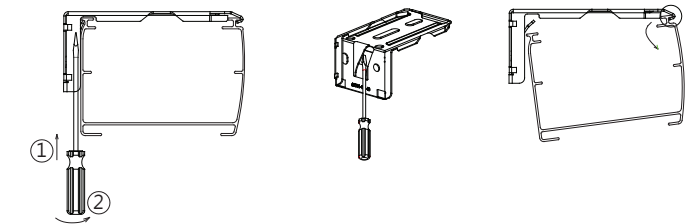
**Operate the Shade by Shade Button:**  
When remote is out of reach, the shade can be operated by Shade Button.

Press the shade button to lower down the shade when the shade is still.  
Press the shade button to stop the shade while the shade is in motion.  
Press the button again to raise up the shade.



REMOVE THE SHADE

Fully raise the shade, and then gently remove the bracket off the headrail with a flat screwdriver. Remove the shade.



TROUBLESHOOTING

Problems	Possible Cause	Description
No reaction upon operation	No Signal	Operate the shade by a remote and check the light indicator on the shade. Green light blinks:The shade receives signal normally. Red light blinks:Low battery / Over temperature limit Red/Green light blinks:Other problems No light: Not receiving signal / Not paired with a remote / The shade is powered OFF.
	Low battery of remote	Please check the remote group lights works normally, or replace new batteries.
	Low battery of shade,model# MCS1-B	Please use power charger to charge the shade.
	The shade is not paired with the remote	Press and hold the paired group button,and check if the shade responds. Shade response as shiftx1 means it has been paired. Shade no response means it need to be paried first. Please refer to Remote Control Manual" for pair steps.
	Exposure to High Temperatures	The shade might be overheated when the LED indicator on shade blinks red during operation. Please wait at least 30 minutes and operate the shade again. Please refer to the specification for applicable operating temperature.
	The limits are not fully setup.	Press ▲/▲ on remote to operate the shade and check if the shade light blinks green and the shade works normally. If not, the shade limits might not be fully set up for full functionality, please refer to "Remote Control Manual" to set up shade limits again. <b>IMPORTANT!</b> Top and Bottom limits must be setup for full function of the shades.
Limits Shift	Other Problems	Re-power ON: Hold the shade button for 3 seconds to power ON/OFF the shade. If the problem still exists, please try “Hardware reboot”. Hardware reboot: Hold the shade button for 10 seconds until the red light illuminates and the shade will reboot. If the problem still exists, please contact customer service for further assistance.
	Abnormal power failure	Abnormal power failure may cause a shift of limits, please refer to "Remote Control Manual" to set up limits again.
	Others	Please contact customer service for further assistance.

SAFETY STATEMENT

Federal Communication Commission Interference Statement

This device complies with Part 15 of the FCC Rules. Operation is subject to the following two conditions: (1) This device may not cause harmful interference, and (2) this device must accept any interference received, including interference that may cause undesired operation.

This equipment has been tested and found to comply with the limits for a Class B digital device, pursuant to Part 15 of the FCC Rules. These limits are designed to provide reasonable protection against harmful interference in a residential installation. This equipment generates, uses and can radiate radio frequency energy and, if not installed and used in accordance with the instructions, may cause harmful interference to radio communications. However, there is no guarantee that interference will not occur in a particular installation. If this equipment does cause harmful interference to radio or television reception, which can be determined by turning the equipment off and on, the user is encouraged to try to correct the interference by one of the following measures:

- Reorient or relocate the receiving antenna
- Increase the separation between the equipment and receiver.
- Connect the equipment into an outlet on a circuit different from that to which the receiver is connected.
- Consult the dealer / installer or an experienced radio/TV technician for help.

FCC Caution: Any changes or modifications not expressly approved by the party responsible for compliance could void the user's authority to operate this equipment.

This transmitter must not be co-located or operating in conjunction with any other antenna or transmitter.

**Industry Canada Equipment Standard for Digital Equipment (ICES) –Canada**  
This Class B digital apparatus complies with Canadian ICES-003.

**CAN ICES-3 (B)/NMB-3(B)**  
Cet appareil numérique de la classe B est conforme à la norme NMB-003 du Canada.

**Innovation, Science and Economic Development Canada(ISED) Compliance Statement**  
This device complies with ISED's licence-exempt RSS standard(s). Operation is subject to the following two conditions: (1) this device may not cause interference, and (2) this device must accept any interference, including interference that may cause undesired operation of the device.

Le présent appareil est conforme aux CNR d' ISED applicables aux appareils radio exempts de licence. L'exploitation est autorisée aux deux conditions suivantes : (1) le dispositif ne doit pas produire de brouillage préjudiciable, et (2) ce dispositif doit accepter tout brouillage reçu, y compris un brouillage susceptible de provoquer un fonctionnement indésirable.

SAFETY INSTRUCTIONS FOR LITHIUM BATTERY

**The product may contain lithium-ion batteries; the battery containsflammable materials, such as organic solvents. Mishandling of the battery may cause fire, smoke, or explosion.**

**▲ DANGER**  
**Do not immerse the battery in any liquid, such as water, beverages, or other fluids.**  
Exposure to liquid may damage the battery or the battery pack. Damaging the battery may generate heat, smoke, catch fire, or explode.

**Do not use or place the battery in or near an open flame, heater or high temperature areas (above 80°C or 176°F) , such as those near a microwave or other cooking appliance.**  
Subjecting the battery to high temperature or near electromagnetic radiation may damage the polyolefin separator and can cause short circuit. This may cause the battery to generate heat, smoke, catch fire, or explode.

**About Charging: Do not use unauthorized chargers.**  
Only charge the battery within recommended conditions (e.g., temperature range, voltage, and current). Use of an unauthorized charger could cause the battery to generate heat, smoke, catch fire, or explode.

**Do not attach or insert battery with polarity reversed.**  
If the battery does not easily fit into the charger or device, check the battery orientation. Do not force the battery into the compartment. If the battery is inserted incorrectly, the battery may generate heat, smoke, catch fire, or explode.

**Do not connect the battery to an AC outlet or DC automotive plug.**  
The battery requires a specific charger. If the battery is connected directly to a power outlet, the battery may generate heat, smoke, catch fire, or explode.

**Do not use the battery in equipment for which it was not intended.**  
If the battery is used in unapproved applications or systems, the battery may be damaged and generate heat, smoke, catch fire, or explode.

**Keep the battery away from heat and fire.**  
Excessive heat will damage the battery and may cause it to generate smoke, catch fire, or explode.

**Do Not** connect the positive (+) and negative (-) terminals with a conductive material. Do not carry or store the battery with any metal objects. If the battery is shorted, it may overheat and the battery may generate heat, smoke, catch fire, or explode.

**Avoid excessive impact to the battery.**  
Impact beyond specification may damage the battery. This may cause the battery to leak, generate heat, smoke, catch fire, or explode.

**Do not penetrate the battery with any sharp object.**  
If subjected to a hard strike or penetrated by an object, the battery may be damaged, thereby causing the battery to short-circuit. This may cause the battery to generate heat, smoke, catch fire, or explode.

**Do not directly solder to the battery.**  
Soldering directly to the battery could melt the separator, damage the fume release vent or other safety mechanisms. This may cause the battery to generate heat, smoke, catch fire, or explode.

**Do not disassemble the battery.**  
Disassembly or modification of the battery may damage the protection circuit. This may cause the battery to generate heat, smoke, catch fire, or

explode.  
**Do not charge the battery near high temperature.**  
If the battery is charged while exposed to high temperature, the battery's protection circuit may activate and prevent charging, or fail and cause the battery to generate heat, smoke, catch fire, or explode.

**▲ WARNING**  
**Ingestion**  
Keep away from small children.  
Keep the battery away from small children. If the battery or any of its component parts is swallowed, seek medical attention immediately.

**Mixed Use**  
Do not mix with other batteries.  
The battery should not be used with other batteries having a different capacity, chemistry, or manufacturer. Doing so could cause the battery to generate heat, smoke, catch fire, or explode.

**Rust, Discoloration and Deformities**  
Do not use abnormal batteries.  
Immediately stop using the battery if there are noticeable abnormalities, such as smell, heat, discoloration, or deformity. The battery may be defective and could generate heat, smoke, catch fire, or explode with continued use.

**Charging Time**  
Stop charging if the charging process cannot be finished.  
If the battery cannot finish the charging process within the specified time, halt the charging process. The battery may generate heat, smoke, catch fire, or explode.

**Leakage -1**  
Do not use a leaking battery near open flame.  
If the battery or liquid leaking from the battery has an irritating odor, the battery should be kept away from any open flame. If exposed to an open flame, the battery could ignite and explode.

**Leakage -2**  
Do not touch a leaking battery.  
If liquid leaking from the battery gets into your eyes or makes contact with your skin, immediately flush your eyes or skin with clean water and seek medical attention. If left untreated, it will cause significant eye or skin damage.

**Transport**  
Pack the battery securely for transport.  
To prevent short-circuit or damage during transport, securely pack the battery in a case or carton.

**▲ CAUTION**  
**Exposure to Direct Sunlight**  
Do not use or leave the battery in a location exposed to excessive heat, such as in direct sunlight or in a car. Doing so could cause the battery to generate heat, smoke, catch fire, or explode. It may also cause the battery's performance and life to deteriorate.

**Use with other Equipment or Power**  
The battery pack has a protection circuit. Do not use the battery with other equipment or power as it may damage the protection circuit. If the protection circuit fails, the battery may generate heat, catch fire, smoke, or explode.

**Charging Temperature Range**  
Only charge the battery between 5°C and 35°C. Charging outside of this temperature range may cause the battery to leak, generate heat, or result in serious damage. It may also cause the battery's performance and life to deteriorate.

**Charging Method**  
Read the user's manual for proper product charging method.

**First Time Usage**  
Please contact the supplier if the battery gives off an unusual odor, generates heat, or shows signs of rust prior to its initial use.

**Flammable Materials**  
Do not charge or discharge near flammable materials. Doing so could result in fire.

**Handling of Exposed Contacts or Conductors**  
If the battery pack has a system interface consisting of stripped lead wires or exposed contact plates, handle with due care. Temporarily insulate exposed contacts and conductors with an insulator such as polypropylene tape or polyvinylchloride tape. Failure to do so could result in an electrical shock; a short circuit causing the battery to generate heat, smoke, catch fire, or explode; or the combustion of other materials.

**Recycling**  
When disposing of the battery, recycle it according to local rules and regulations.