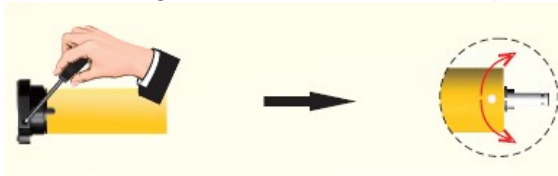


AutoWand™ User Manual

1. **Enter Setting Mode** (motor will automatically leave setting mode if there is no action for 10s)



Press SET for 1s

Motor will jog once when entering setting mode

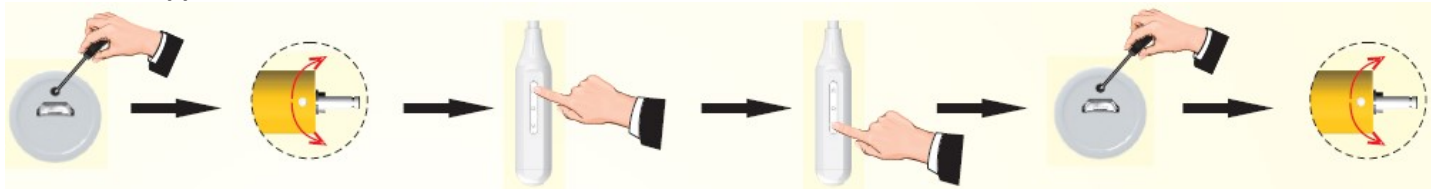
2. **Switch Direction** (use only if the direction of movement is reversed)



In setting mode, press DOWN

Motor will jog once after direction is switched

3. **Set Upper and/or Lower Limit**



Press SET on the bottom of the handle

Motor will jog once after entering limit setting mode

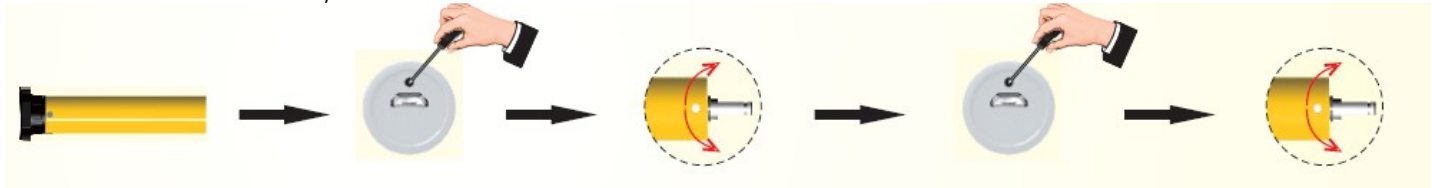
Press UP to set Up limit

Or Press DOWN to set Down limit

Adjust shade to desired position, Press SET on bottom of handle again

Motor will jog once when limit is saved

4. **Set Favorite Position** (Optional setting: The shade will stop at this additional saved position each time the shade is raised or lowered)



Adjust shade to desired Favorite position

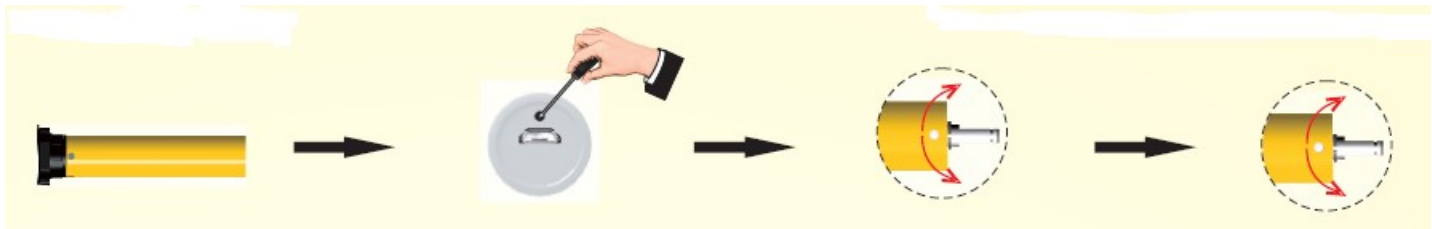
Press SET on bottom of handle

Motor will jog once after entering Limit set mode

Press SET on the bottom of handle again

Motor will jog once when Favorite position is saved

5. **Erase all Limits**



Press SET on bottom of handle for 7s

Motor will jog once after button is pressed

Motor will jog again to indicate that limits are erased