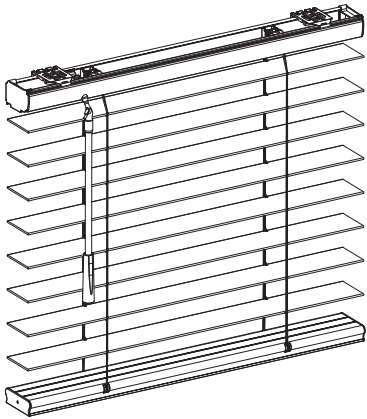


Installation & Maintenance Instructions



Getting Started




Remove the blind from the package. Be sure to keep the packaging until the blind operates to your satisfaction. Please take a moment to review the following installation guide for proper installation.

Recommended Tools

- Measuring Tape
- Pencil
- Level
- Screwdriver
- Power drill (1/4" hex driver and drill bit)

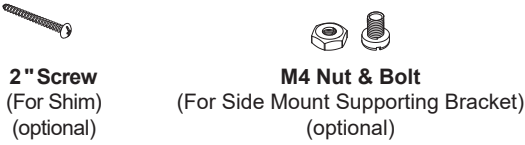
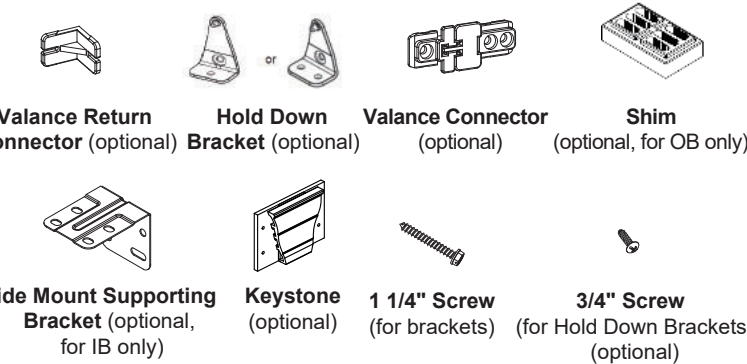


You will need to use the following fasteners for your particular mounting surface.

Mounting Surface	Fastener
Wood	1 1/4" Hexagonal Head Screw (Provided) 
Drywall/Plaster	Wall Anchors, Expansion Bolts (Not Provided) 
Metal	Sheet Metal Screws (Not Provided) 

Check Component / Hardware:

Check your package for contents needed for proper installation.



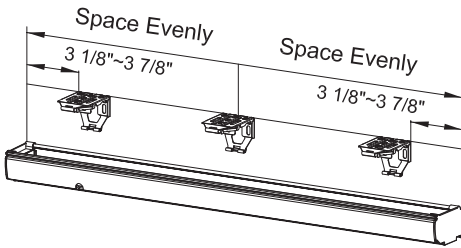
Hardware Standard Quantity

Blind Width (X)	X≤37"	37"<X≤47"	47"<X<60"	60"≤X≤75"	75"<X≤96"
Installation Bracket	2	3	4	4	5
1 1/4" Screw for Installation Bracket	4	6	8	8	10
Wand	1				
Valance Clip(optional)	2	3	3	4	4
Valance Return Connector for Modern Curved Valance(optional)	2				
Valance Return Connector for Designer Crown Valance(optional)	4				
Hold Down Bracket (optional)	2				
3/4" Screw for Hold Down Bracket	Double hole Hold Down Bracket qty*2 Single hole Hold Down Bracket qty*1				
Shim (Optional)	1pcs for extend distance 3/8" 2pcs for extend distance 11/16"				
2" Screw (For Bracket with Shim)	4	6	8	8	10
Side Mount Supporting Bracket (Optional)	2 (Please do not joint side mount supporting bracket kits with regular brackets to do side mount for net blind widths over 37".)				
M4 Nut&Bolt for Side Mount Supporting Bracket	4 sets				

Note: You may find more hardware parts than you actually need. In that case, feel free to set them aside for future use.
Valance Return Connector is provided only when returns are required.

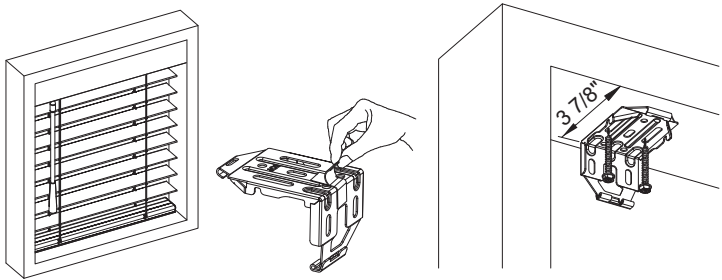
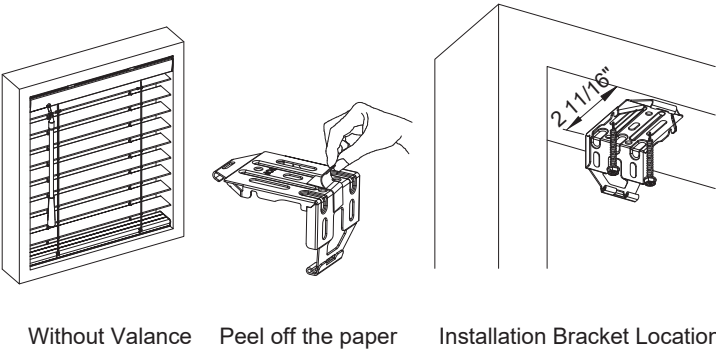
Step1.Bracket Installation

Mark the bracket location on the mounting surface.
For easy installation and proper blind operation, use a level to ensure all brackets are alignment.

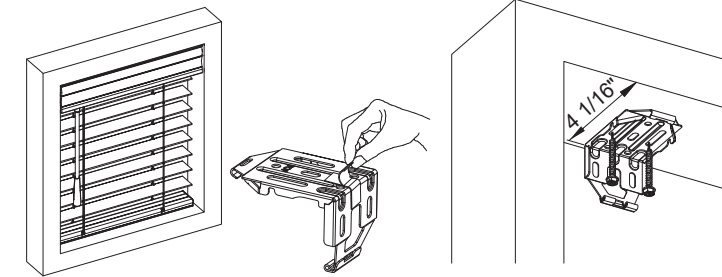


Allocate min. distance from wall face to the backside of the brackets.
Peel off the double-sided adhesive tape on the bracket and stick the bracket at the marked location. Use two 1 1/4" mounting screws to secure bracket. Use wall anchors for drywall or plaster wall.

Inside Mount

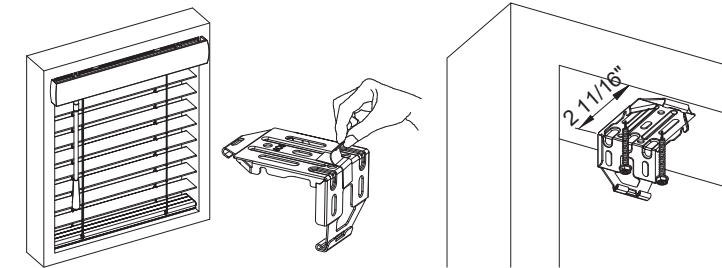


With Modern Curved Valance (optional) No Valance Return



With Designer Crown Valance (optional) No Valance Return

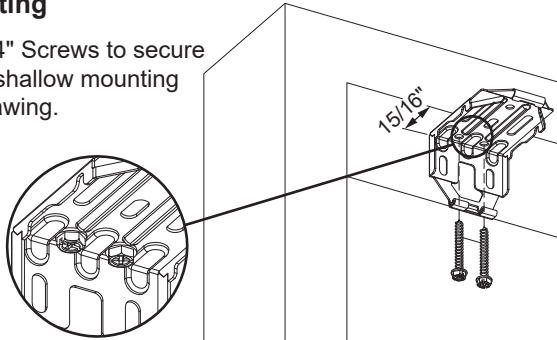
Semi-inside Mount (Bracket flush to wall)



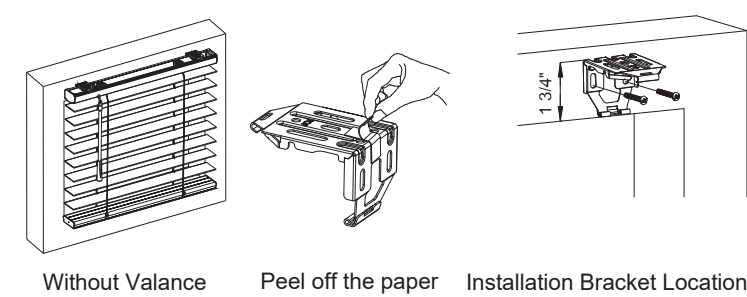
With Valance and Valance Return (optional)

Shallow Mounting

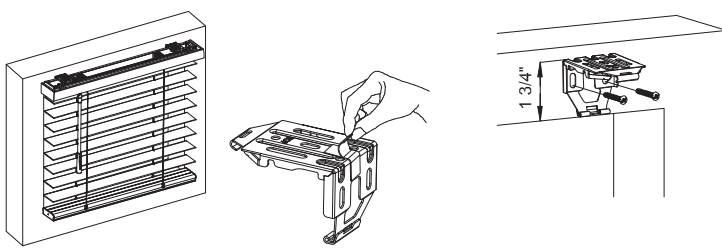
Use 2pcs of 1 1/4" Screws to secure the bracket with shallow mounting holes as right drawing.



Outside Mount



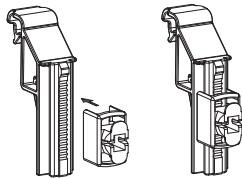
Without Valance



With Valance and Valance Return (optional)

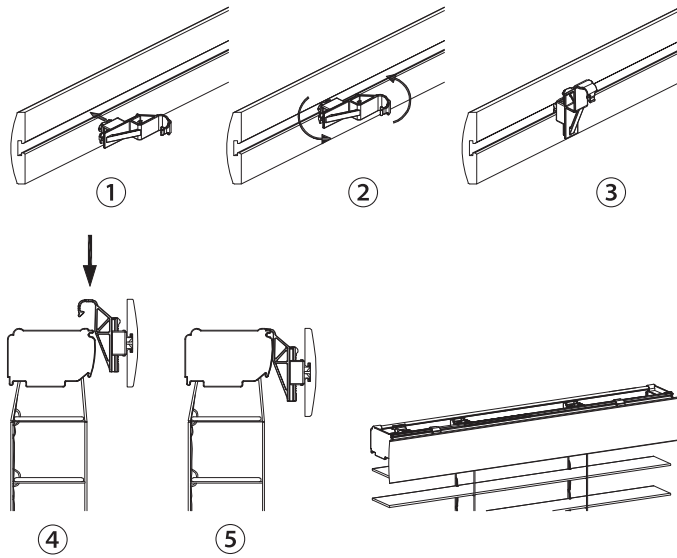
Step 2. Install the Adjustable Valance Clip (for valance option)

- Attach the valance clip plug into the receptor. Refer to the below drawing for the plug position.

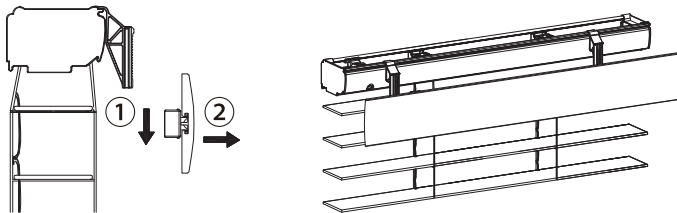


Attach the valance clip plug and receptor into the channel on the backside of the valance. Attach the valance return if needed. Hook the valance clip receptors onto the headrail and space them evenly.

Make sure receptors are not in obstructive position with the drum support or wand tilter inside the headrail and the brackets.

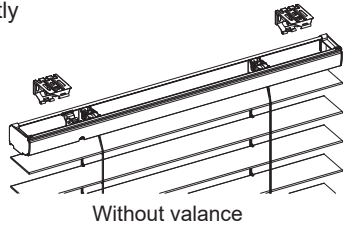


Remove the valance together with valance clip plugs away from the receptors before installing the blind. **Leave the receptors on the headrail.**

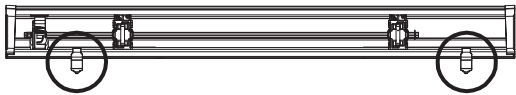


Step 3. Install the Blind

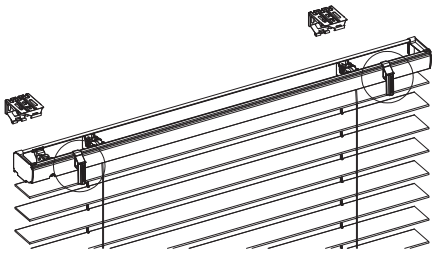
- For blinds without a valance, attach the headrail to the brackets directly as right drawing.



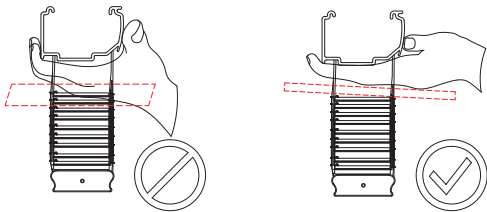
- If valance is required, make sure the valance clip receptors are attached on the headrail before installing the headrail.



- Install the blind as shown in the right drawing for valance options.

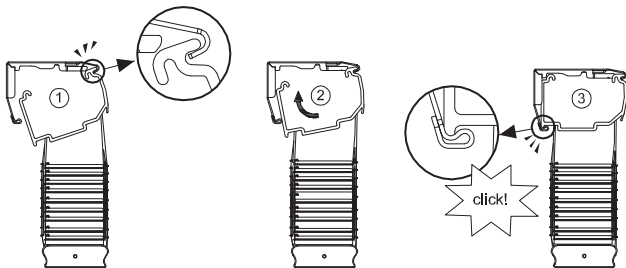


⚠ To mount the blind, gently hold the headrail flat. Do not grasp the back of the headrail or apply too much downward pressure to the slats to minimize stretching the ladders.



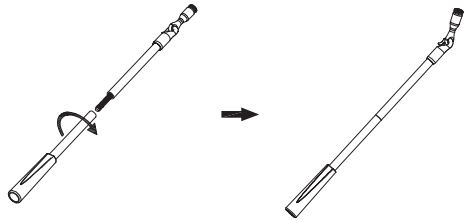
Attach the headrail to brackets.

- Start with attaching the headrail front to the bracket first.



Step 4. Assemble the Split Wand (if needed)

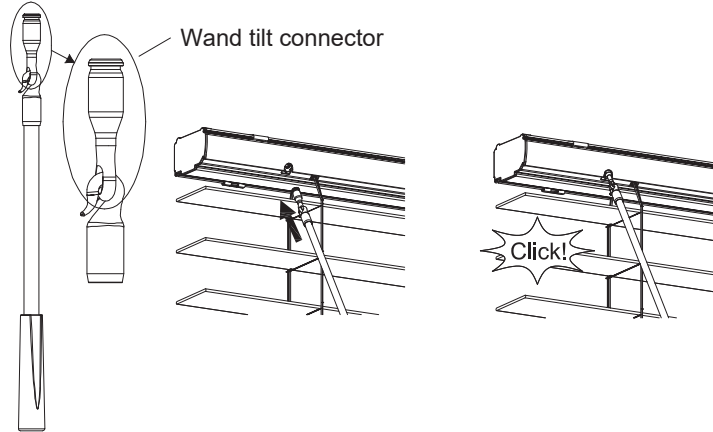
For split wand, screw the wand to the other end (with connector) clockwise till firmly connected.



Step 5. Insert the Wand

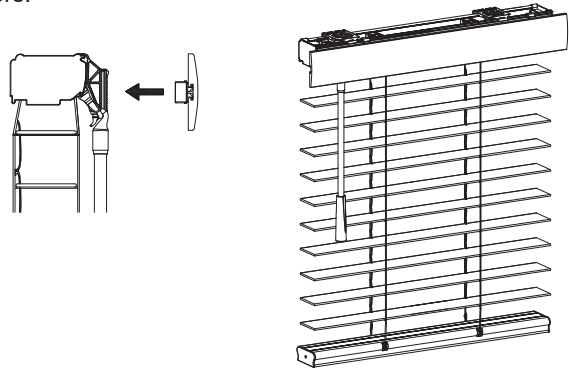
Insert wand tilt connector into the bottom of headrail till they are clicked.

Do not take down the wand after installed.

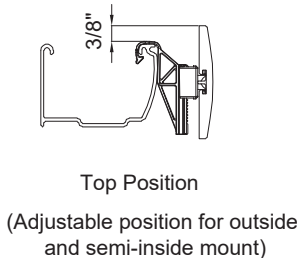
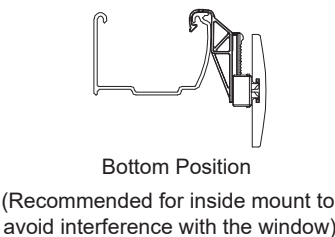


Step 6. Attach the Valance (for valance option)

Attach the valance to the headrail by inserting the plugs into the receptors.



- Finalize valance installation position first.
- Attach the valance to the headrail by inserting the plugs into receptors as below drawing. Adjust the position by sliding the valance plug up and down without taking it down.



If the valance return is needed, join the valance return with valance by valance return connector first, and then attach the valance together with valance returns to the headrail.

Modern Curved Valance with Valance Returns(optional)



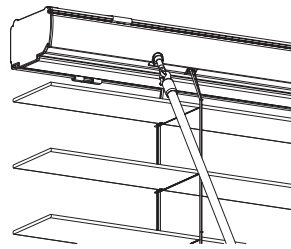
Designer Crown Valance with Valance Returns(optional)



Operate Your Blind

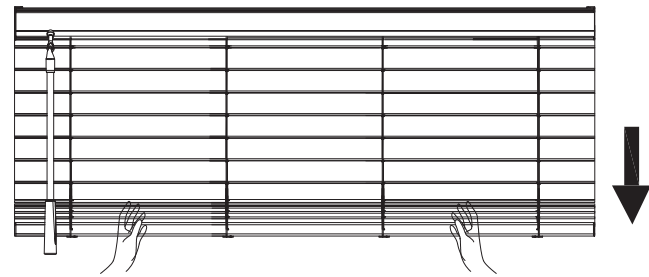
Tilt wand

Rotate wand to attain desired slat position.



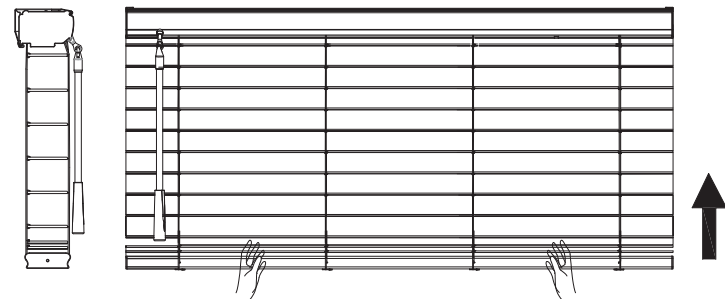
Lower the blind

The slats need to be opened at any angle and kept even when pulling the bottom rail down by hand.



Raise the blind

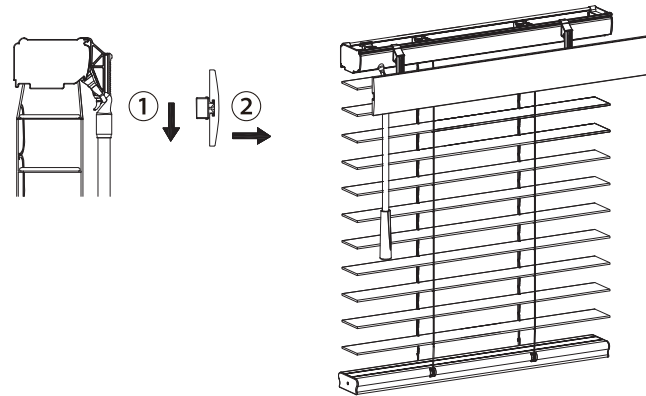
Gently tilt the slats level before lifting the bottom rail up by hand.



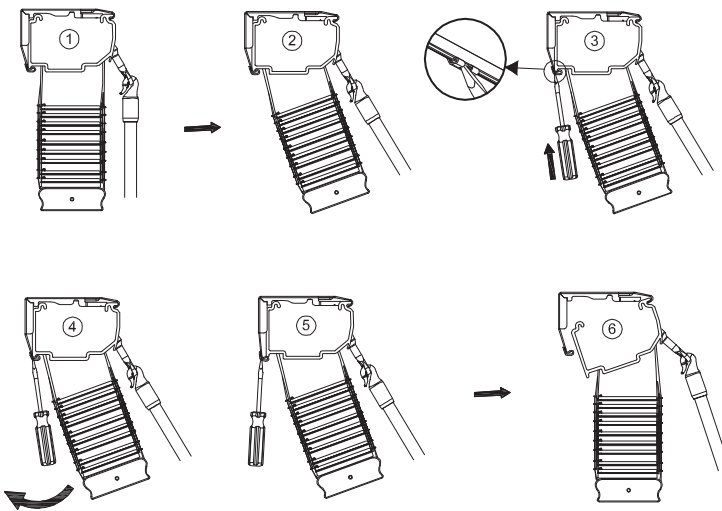
⚠ Do not put the slats in a closed up or closed down position while lifting the bottom rail.

Remove the Blind

Remove the valance and valance clip plugs away from the receptors first if valance is included.



Remove the blind from brackets



Cleaning Instructions

Performing periodic simple cleaning of your blind will keep your blind looking its best for the years to come. There are two ways to clean. You can dust it with a duster or dusting mitten, or simply use a soft cloth, slightly moistened with lukewarm water, to wipe down the slats. You can clean it with the blind hanging on the window, or you can take it down completely. By tilting the slats down but not fully closed, you will be able to clean most of the top surface of each slat. **Do not use detergent or abrasive cleaning solutions to clean the blind since it will likely cause damage to the blind.**

Troubleshooting Guide

When the bottom rail doesn't pivot as much:

When the blind is lowered all the way to the bottom, with too much pull force, the cordless mechanism may be locked by accident, causing the bottom rail to stop fully rotating while you try to close the blind. To fix, gently push the bottom rail upward with both hands to unlock the mechanism.

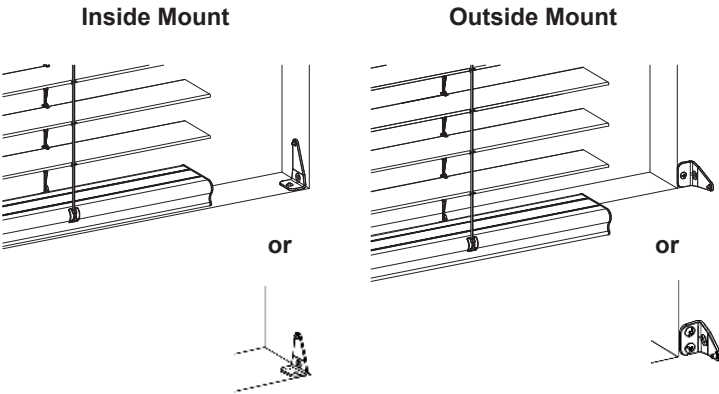
When raising the blind, the blind doesn't lock at a certain position:

It is likely that the cords inside the cordless mechanism become tangled. To fix, gently lower the blind with both hands all the way to the bottom. While the slats are in a horizontal position, raise the blind again.

Optional Hardware Installation Instructions

How to install Hold Down Brackets (if included)

Attach the hold down brackets against a flat surface, horizontally or vertically, parallel to the bottom rail. Make sure the protruding area is aligned with the hole on the side of the bottom rail. Secure the hold-down bracket into the bottom rail on both sides to keep blinds in desired location.

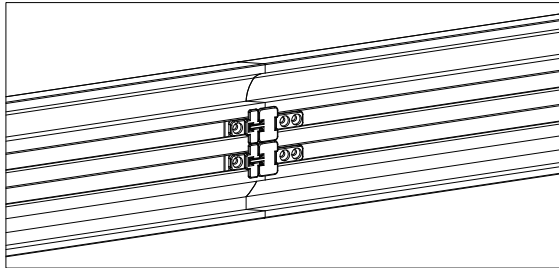
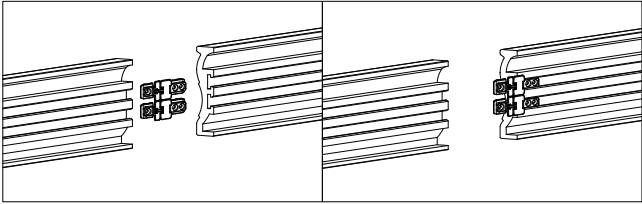


How to install Valance Connector (if included)

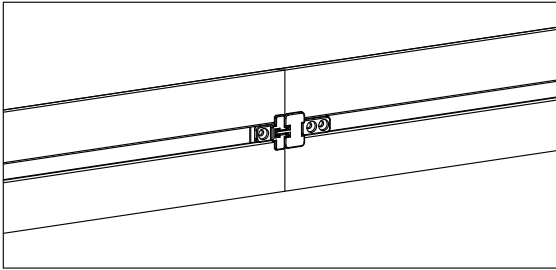
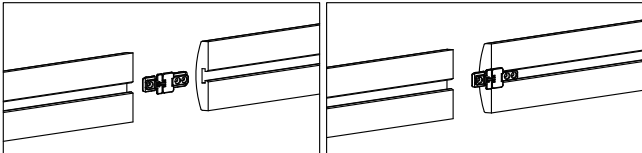
Valance Connector is only supplied for connecting spliced valances.

Put the valance connector into the slot on the back of the valance as below drawing:

For 3.25" Designer Crown Valance:

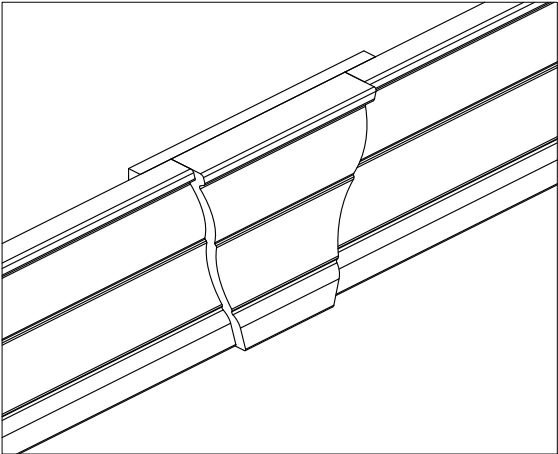
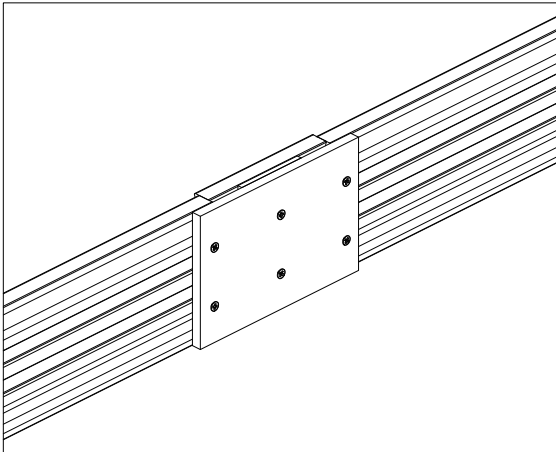
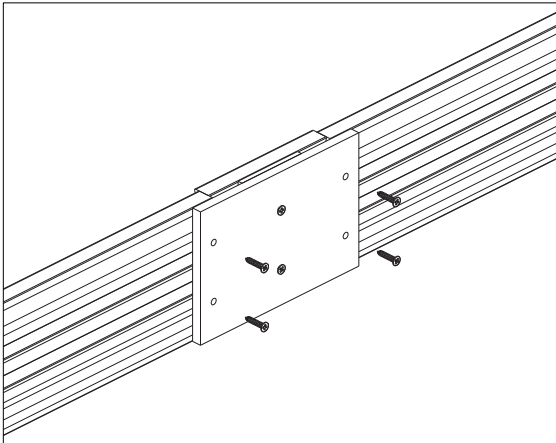
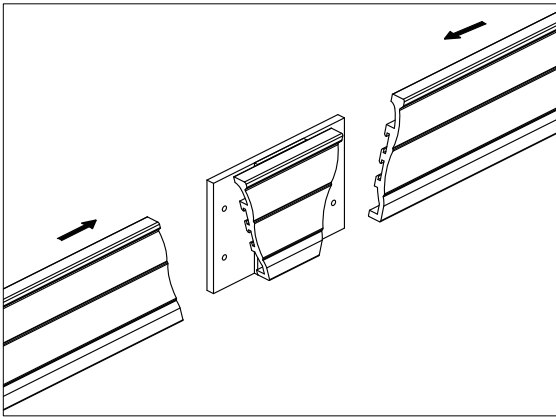


For 2.5" Modern Curved Valance:



How to install Keystone (if included)

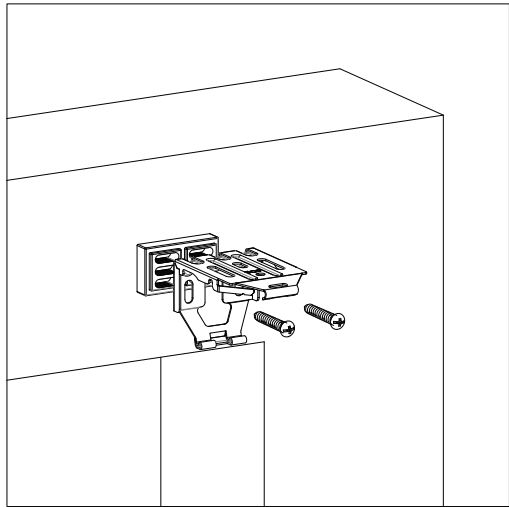
Put the split valance to the keystone as below drawing. Use screws to secure the back of the keystone.



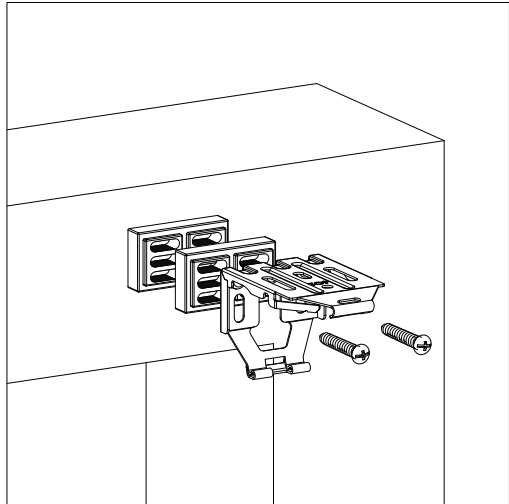
How to install Shims (if included, for OB only)

Use 2pcs of 2" screws to secure the bracket and shim as below drawing. Make sure the bracket holes align to the shim holes.

1pc for extend distance 3/8"



2pcs for extend distance 11/16"



How to install side mount bracket (if included, for IB only)

Side Mount bracket installation is available as an option for inside mount with blind width(net)≤37".

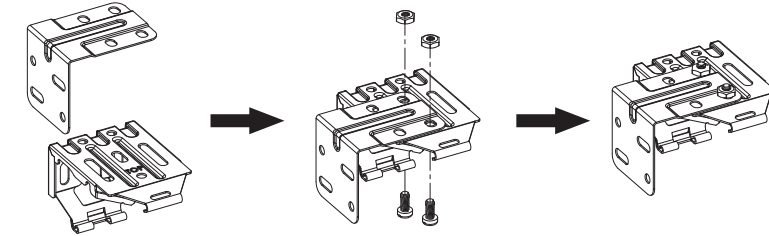
For inside mount with net blind widths over 37", Side Mount Supporting Bracket Kits can be requested, but regular installation brackets must be used on blinds with widths greater than 37" in order to support the blind.

Please do not joint side mount supporting bracket kits with regular brackets to do side mount for net blind widths over 37".

Step 1, assemble side mount bracket

When assembling the side mount supporting bracket, please use the installation bracket that is provided with the blind.

Align the side mount supporting bracket holes with the installation bracket holes, and then screw the M4 nut & bolt into the **outside holes** for the left side mount bracket. Do the same for the right side mount bracket.



Step 2, install side mount bracket

Peel off the double-sided adhesive tape on the bracket and stick the bracket at the marked location. Put two 1 1/4" mounting screws into the **diagonal holes** to secure bracket. Use wall anchors for drywall or plaster wall.

