

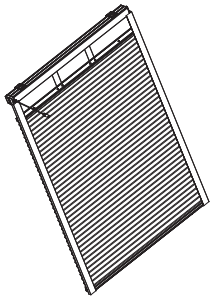
MOTORIZED HONEYCOMB SHADES FOR SKYLIGHTS

Catalogue

• INSTALLATION INSTRUCTION	01
• SAFETY PRECAUTIONS	03
• SHADE OPERATION	03
• MOTORIZED HONEYCOMB SHADES FOR SKYLIGHTS - TROUBLESHOOTING	04
• TROUBLESHOOTING	04
• SAFETY STATEMENT	05




Installation Instructions

MOTORIZED HONEYCOMB SHADES FOR SKYLIGHTS



NO.	Item	Specification
1	Power Source	36W AC Adapter / DC Low Voltage Hard Wire
2	Input	36W AC Adapter : 100-240V, 50/60Hz DC Low Voltage Hard Wire: 12V or 24V, 2A Max
3	Output	24V, 1.32A Max.
4	Radio type	2.4G RF
5	Motor type	Brush DC motor
6	Operating Temperature	0°C ~ 40°C / 32°F ~ 104°F
7	Relative Humidity	0%~90%(Non-condensing)

FCC ID: Q3V-MCS1
IC ID: 28542-MCS1
CAN ICES-003 (B) / NMB-003(B)



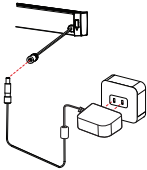
READ BEFORE INSTALLATION

▲ WARNING! Important safety instructions. Follow all instructions since incorrect installation can lead to severe injury. Before installing the device, remove any unnecessary cords or components and disable any equipment not needed for powered operation.

▲ WARNING! The installation height will vary according to product type or installation situation and may exceed 98.43" (2.5m).

Reserve space before installation:
Make sure to provide proper accessibility to an electrical outlet.

▲ IMPORTANT! Wiring and servicing of these products should be referred to qualified personnel.




Getting Started

Remove shade from package. Save packaging until shade is installed and working to your satisfaction

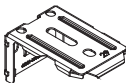
Tools:

- Level
- Measuring Tape
- Pencil
- Power drill
- (1/4" hex driver and drill bit)
- Screwdriver




Surface	Fastener
Wood	#8 1 1/4" Screws (Provided) #6 3/4"screws
Drywall/Plaster	Wall Anchors, Expansion Bolts (Not Provided)
Metal	Sheet Metal Screws (Not Provided)


Check Components/Hardware:



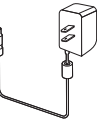
X ≤ 39" x2pcs
39" < X ≤ 48" x3pcs
(X=Order Width)




X ≤ 39" x2pcs
39" < X ≤ 48" x3pcs
(X=Order Width)




1 1/4" Screw for Installation Bracket



36W AC Adapter

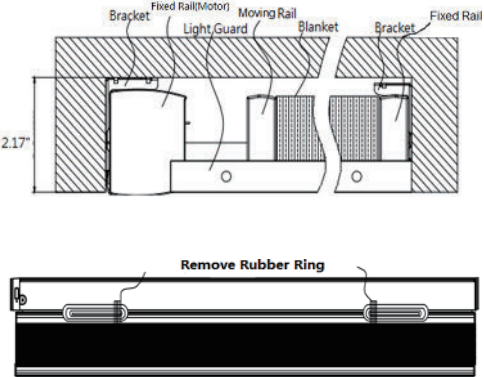


6.6 ft. Extension Cable (Optional)
(for 36W adapter)



DC Connection Harness
(for Power Panel)

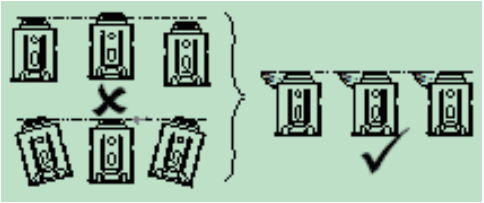
Preview the Installed Shade



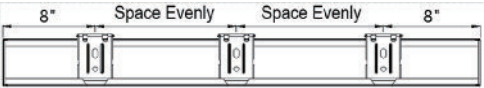
The shade can be installed horizontally. However, if there is a slope, the fixed rail with the motor must be installed on the higher side.

Step 1: Bracket Installation

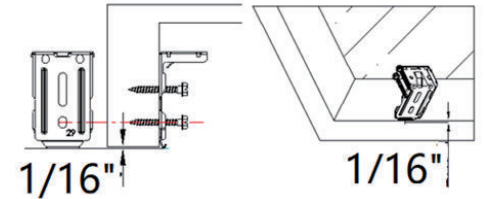
For the shade to operate properly, it is essential that the mounting brackets are installed level. Use shims if necessary to achieve proper alignment. Ensure all brackets are aligned evenly. Please refer to the drawing below.



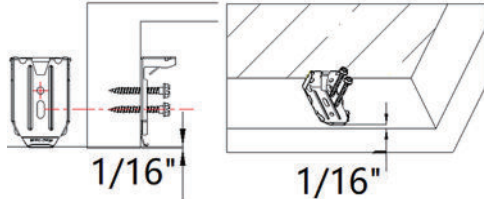
Measure 8" in from both ends of the Fixed Rail with Motor and the Fixed Rail. Evenly space the remaining brackets between these points and mark their positions on the mounting surface.



For Fixed Rail for Motor Bracket: Use two 1/4" mounting screws to secure each bracket. Position the bracket so it protrudes 1/16" from the front edge of the window frame.

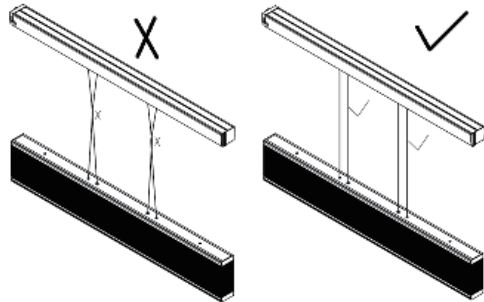


For Fixed Rail bracket: Use two 1/4" mounting screws to secure each bracket. For drywall or plaster surfaces, use wall anchors. Position the bracket 1/16" away from the front edge of the window frame.



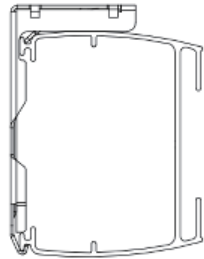
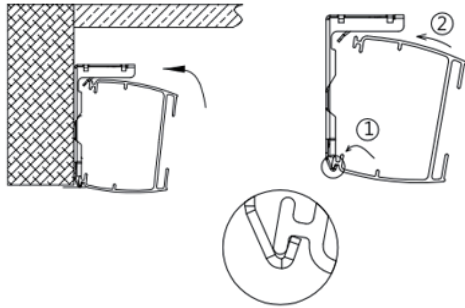
Step 2: Attaching the Rails

① Remove the fasten rubber ring and untangle the cords.



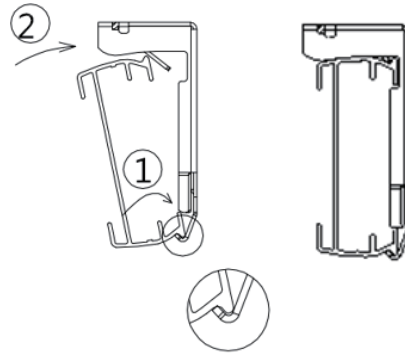
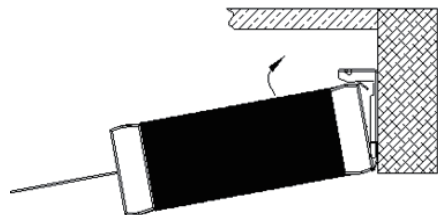
② Position the Fixed Rail with Motor at a slight angle and hook it onto the front edge of the bracket. Then push upward until it snaps securely into place.

Note: You will hear a “click” when this rail is properly secured.



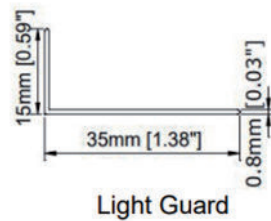
③ Straighten the cords, then lift the Moving Rail and Fixed Rail, ensuring the fabric is stacked at the Fixed Rail. Position the Fixed Rail at a slight angle and hook it onto the front edge of the bracket. Then push upward until it snaps securely into place.

Note: A clicking sound will confirm that the Fixed Rail is properly secured.

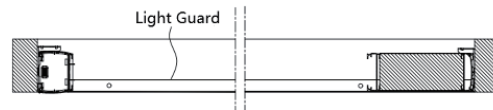


▲ For proper installation, start by attaching the front of the rail to the bracket and ensure to stick right in place.

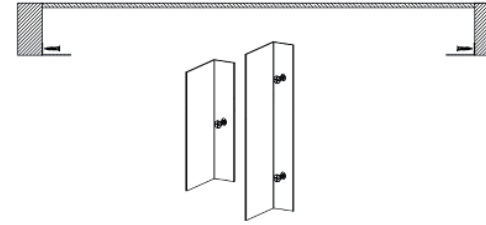
Step 3: Installing Light Guard



① Install the light guard pieces at the front of the shade on both the left and right sides. Begin installation from the Fixed Rail end, ensuring the light guard does not obstruct the signal light on the Fixed Rail with Motor. Align the light guard properly during installation.



② Adhesive tapes are pre-attached on back of light guard. You can peel the tape before securing screws. Secure the light guard using the provided 3/4" flat head screws.

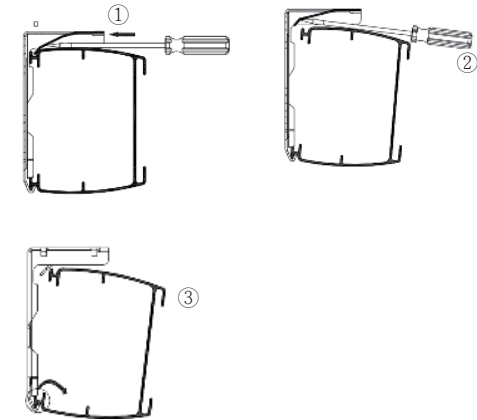


★ Congratulations! You have finished installing the shade.

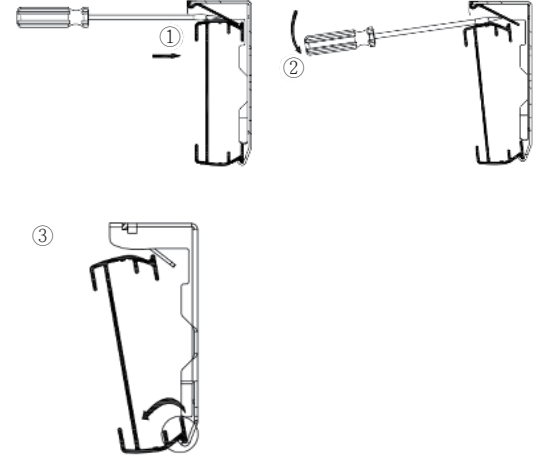
Remove the Shade

- ① Fully Close the shade.
- ② Remove the Light Guard.
- ③ Remove the Fixed Rail with Motor.

Gently pry the bracket off the Fixed Rail with Motor with a flat screwdriver as below picture

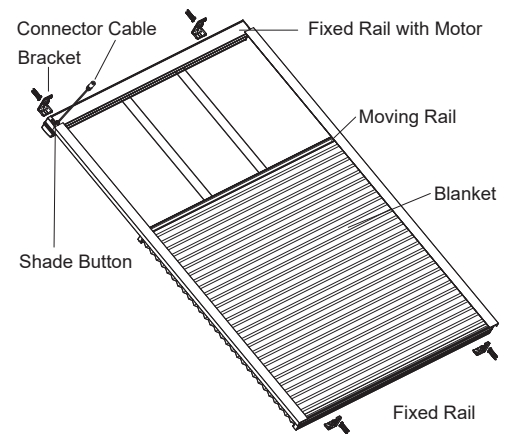


④ Remove the Fixed Rail. Gently pry the bracket off the Fixed Rail with a flat screwdriver as below picture



Cleaning the Shade

Routine cleaning will help maintain the beauty of your shade. The shade can be cleaned by using a soft brush, vacuumed with a low suction hand-held vacuum, cleaned ultrasonically (specify that a mild solution must be used and that the head rail should never be immersed in liquid). Spot cleaning is not recommended, but if necessary, dampen a clean cloth with a solution of warm water and mild detergent to dab the spot until it's gone (do not rub!).



SAFETY PRECAUTIONS

Thank you for your purchase. Please read the instructions carefully before using the product, and save these instructions for future consultation.

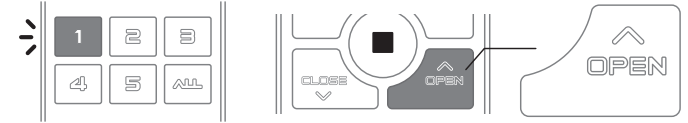
- **WARNING!** Important safety instruction: It is critical for your safety and the safety of those around you to follow these instructions. Save these instructions.
- **WARNING!** The device shall be disconnected from its power source during cleaning, maintenance and when replacing parts.
- The products may contain Lithium-ion batteries; the battery contains flammable materials such as organic solvents. Please read the Important Safety Precautions before using the product.
- Please recharge the batteries every 3-6 months to ensure optimal performance of batteries.
- Product operation is intended for temperatures between 0°C/32°F ~40°C/104°F.
- Please note that the limited warranty will be voided if the product is modified, dismantled or used in any manner other than its intended purpose.
- The accessories, including Power Charger, Remote Control, Hub, and Repeater are designed to be used with : authorized Motorized Shades.
- **DO NOT** use them for any other purpose.
- Please make sure the shade route is clear when operating to avoid danger or damage.
- In order to improve the user experience and functionality, the firmware and software of this product will automatically update from time to time. (When the Hub is installed)
- **WARNING!** For the purposes of recharging the battery, only use the detachable supply unit provided with this appliance(UHVUU3036-240015SA : MX36W1-2401500U).
- **DO NOT** disassemble the products or any of their components. They do not contain serviceable parts. Servicing of these products should be referred to qualified personnel.
- This appliance contains batteries that are only replaceable by skilled personnel, trained authorized retailer or electrician.
- **DO NOT** operate the product with wet hands to avoid risk of electrical shock. The product needs to be powered off and disconnected from its power source during cleaning, maintenance and/or replacing parts.
- **DO NOT** operate the shade or swing the Power Charger while charging.
- The product is not to be used by persons such as children, those with reduced physical, sensory or mental capabilities, or those who lack experience and knowledge of the product, unless they have been given supervision or instruction. Children should be advised not to play with the products.
- **DO NOT** allow children to play with fixed controls. Keep remote controls away from children. Frequently examine the installation for imbalance, signs of wear or damage to cables, springs and fixings.
- **DO NOT** use if repair or adjustment is necessary.
- **DO NOT** operate when maintenance, such as window cleaning, is being carried out in the vicinity.
- **IMPORTANT:** Please reserve space for connecting the Power Charger while installing the shade, please refer to "Read Before Installation" Section for more information.

SHADE OPERATION

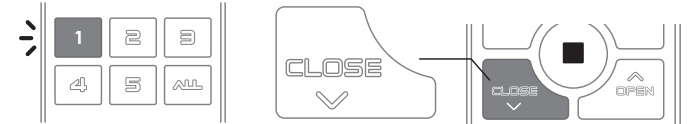
The shade will power on as soon as the power is connected.

1. Operate the Shade by Remote Control:

Select the group of the shade, press OPEN to move shade to fully open.



Select the group of the shade, press CLOSE to move shade to fully closed.



Select the group of the shade, press ^ or v to adjust shade location.

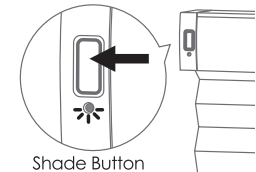


■ : Stop the shade ▲ : Move to Best View 🏠 : Move to Best Privacy ☆ : Move to My Favorite

2. Operate the Shade by Shade Button:

When remote is out of reach, the shade can be operated by Shade Button.

Press the shade button to lower down the moving rail when the shade is still. Press the shade button to stop the moving rail while the shade is in motion. Press the button again to raise up the moving rail.



MOTORIZED HONEYCOMB SHADES FOR SKYLIGHTS - TROUBLESHOOTING

Before you start processing the troubleshooting, please check below few points first.

1. Make sure the shade is turned on.
Shade with Li-ion battery need to press the shade button 3 seconds (and indicator light will flash in green) to turn on the shade.
Shade with adapter will turn on once the adapter is plug on.
2. Make sure both upper and lower limits are set up successfully.
The upper / lower limit are usually pre-set up in factory before shipment. Lost of limits may disabled some function of the shade.
Press below buttons one by one on remote to check whether the upper / lower limit set is existing.

🏠 : Best Privacy

▲ : Best View

☆ : My Favorite

If the shade does not react, please reset limits first, then try the failed operation again to see if the problem was resolved or not.
If not, please go to the following pages.

TROUBLESHOOTING

Problems	Possible Cause	Description
No reaction upon operation	No Signal	Operate the shade by a remote and check the light indicator on the shade. Green light blinks:The shade receives signal normally. Red light blinks:Low battery / Over temperature limit Red/Green light blinks:Other problems No light: Not receiving signal / Not paired with a remote / The shade is powered OFF.
	Low battery of remote	Please check the remote group lights works normally, or replace new batteries.
	The shade is not paired with the remote	Press and hold the paired group button,and check if the shade responds. Shade response as shiftx1 means it has been paired. Shade no response means it need to be paried first. Please refer to Remote Control Manual" for pair steps.
	Exposure to High Temperatures	The shade might be overheated when the LED indicator on shade blinks red during operation. Please wait at least 30 minutes and operate the shade again. Please refer to the specification for applicable operating temperature.
	The limits are not fully setup.	Press 🏠 / ▲ on remote to operate the shade and check if the shade light blinks green and the shade works normally. If not, the shade limits might not be fully set up for full functionality, please refer to "Remote Control Manual" to set up shade limits again. IMPORTANT! Top and Bottom limits must be setup for full function of the shades.

Problems	Possible Cause	Description
No reaction upon operation	Other Problems	Step.1 Re-turn on the shade, check the shade could move functionally. Step.2 Reboot the hardware: Press the shade button for 10 seconds till the red light illuminate. When the hardware finish rebooting, the signal will flash green light. Step.3 confirm the shade could move functionally. If not, please continue below procedures. Step.5 Clear upper / lower limit, make sure the button OPEN/CLOSE on remote are functional, and reset upper/lower limit.
Limits Shift	Abnormal power failure	Abnormal power failure may cause a shift of limits, please refer to "Remote Control Manual" to set up limits again.
	Others	Please contact customer service for further assistance.

SAFETY STATEMENT

Federal Communication Commission Interference Statement

This device complies with Part 15 of the FCC Rules. Operation is subject to the following two conditions: (1) This device may not cause harmful interference, and (2) this device must accept any interference received, including interference that may cause undesired operation.

This equipment has been tested and found to comply with the limits for a Class B digital device, pursuant to Part 15 of the FCC Rules. These limits are designed to provide reasonable protection against harmful interference in a residential installation. This equipment generates, uses and can radiate radio frequency energy and, if not installed and used in accordance with the instructions, may cause harmful interference to radio communications. However, there is no guarantee that interference will not occur in a particular installation. If this equipment does cause harmful interference to radio or television reception, which can be determined by turning the equipment off and on, the user is encouraged to try to correct the interference by one of the following measures:

- Reorient or relocate the receiving antenna
- Increase the separation between the equipment and receiver.
- Connect the equipment into an outlet on a circuit different from that to which the receiver is connected.
- Consult the dealer / installer or an experienced radio/TV technician for help.

FCC Caution: Any changes or modifications not expressly approved by the party responsible for compliance could void the user's authority to operate this equipment.

This transmitter must not be co-located or operating in conjunction with any other antenna or transmitter.

Industry Canada Equipment Standard for Digital Equipment (ICES) –Canada

This Class B digital apparatus complies with Canadian ICES-003.

CAN ICES-3 (B)/NMB-3(B)

Cet appareil numérique de la classe B est conforme à la norme NMB-003 du Canada.

Innovation, Science and Economic Development Canada(ISED) Compliance Statement

This device complies with ISED's licence-exempt RSS standard(s).

Operation is subject to the following two conditions: (1) this device may not cause interference, and (2) this device must accept any interference, including interference that may cause undesired operation of the device.

Le présent appareil est conforme aux CNR d'ISED applicables aux appareils radio exempts de licence. L'exploitation est autorisée aux deux conditions suivantes : (1) le dispositif ne doit pas produire de brouillage préjudiciable, et (2) ce dispositif doit accepter tout brouillage reçu, y compris un brouillage susceptible de provoquer un fonctionnement indésirable.